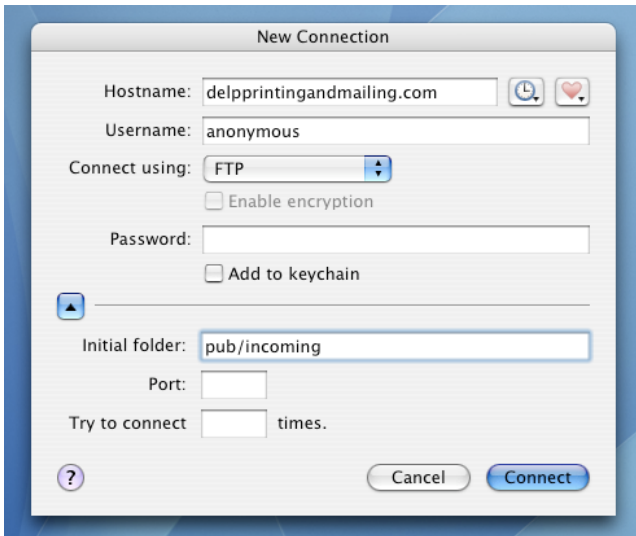


Delp FTP Server Instructions for Mac OS X



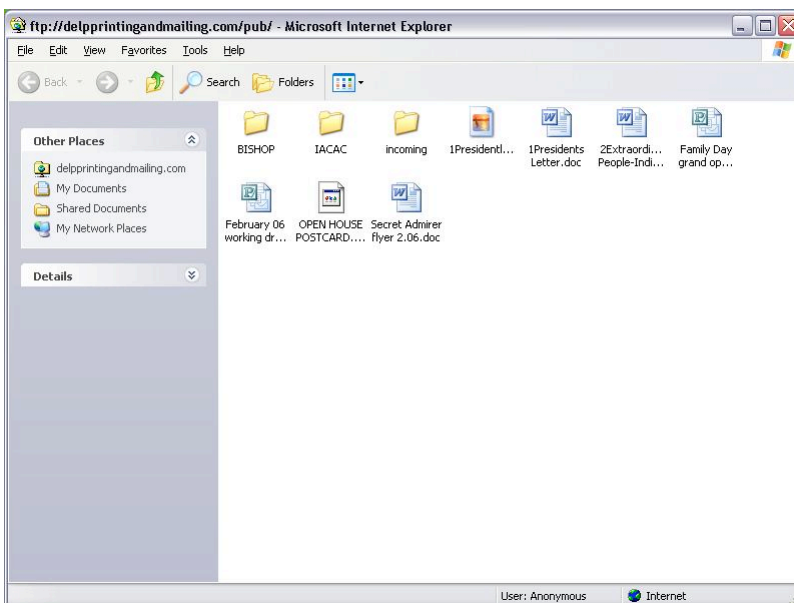
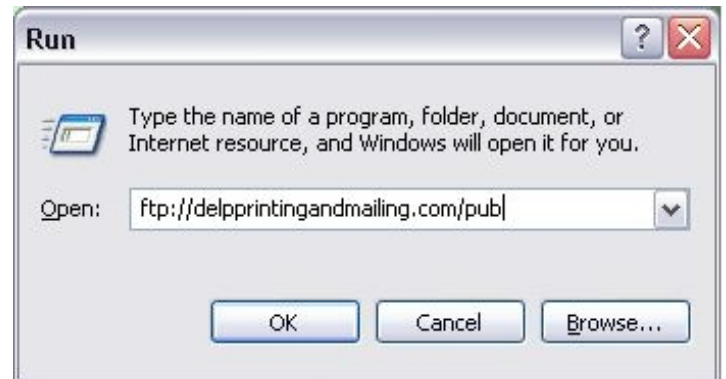
Step 1: Open an FTP program, such as Fetch, and enter the information shown

Step 3: Once connected, you will be inside the “incoming” directory. Drag your files into here. Once they are inside that directory, they will not be readable by anyone but Delp Printing and Mailing.

Delp FTP Server Instructions for Windows XP

Step 1: Go to “Start -> Run” and enter:

ftp://delpprintingandmailing.com/pub



Step 2: Wait about 10-30 seconds for the ftp window to open. Then, place your files inside the “incoming” directory. Once they are inside that directory, they will not be readable by anyone but Delp Printing and Mailing.